

Ultrasound assisted HA filler injection

Won Lee MD, PhD, Plastic Surgeon

Yonsei E1 Plastic Surgery Clinic

The use of soft tissue fillers is one of the most commonly used aesthetic procedures for facial rejuvenation. Vascular complications, such as skin necrosis and ocular complications, are the most serious complications of filler injections. Doppler ultrasound can be used to detect almost all arteries of the face before injecting the HA filler. The relatively more dangerous sites of filler injection are the glabellar wrinkle, forehead, temple, nose, and nasolabial fold area, and it is recommended to map the vasculature of these areas by Doppler ultrasound before performing filler injection. Internal carotid arterial branches, the supratrochlear, supraorbital and dorsal nasal arteries, and external carotid arterial branches, the superficial temporal and facial arteries, are very important arteries when injecting HA filler; thus, Doppler ultrasound detection is recommended.

Glabellar wrinkle correction

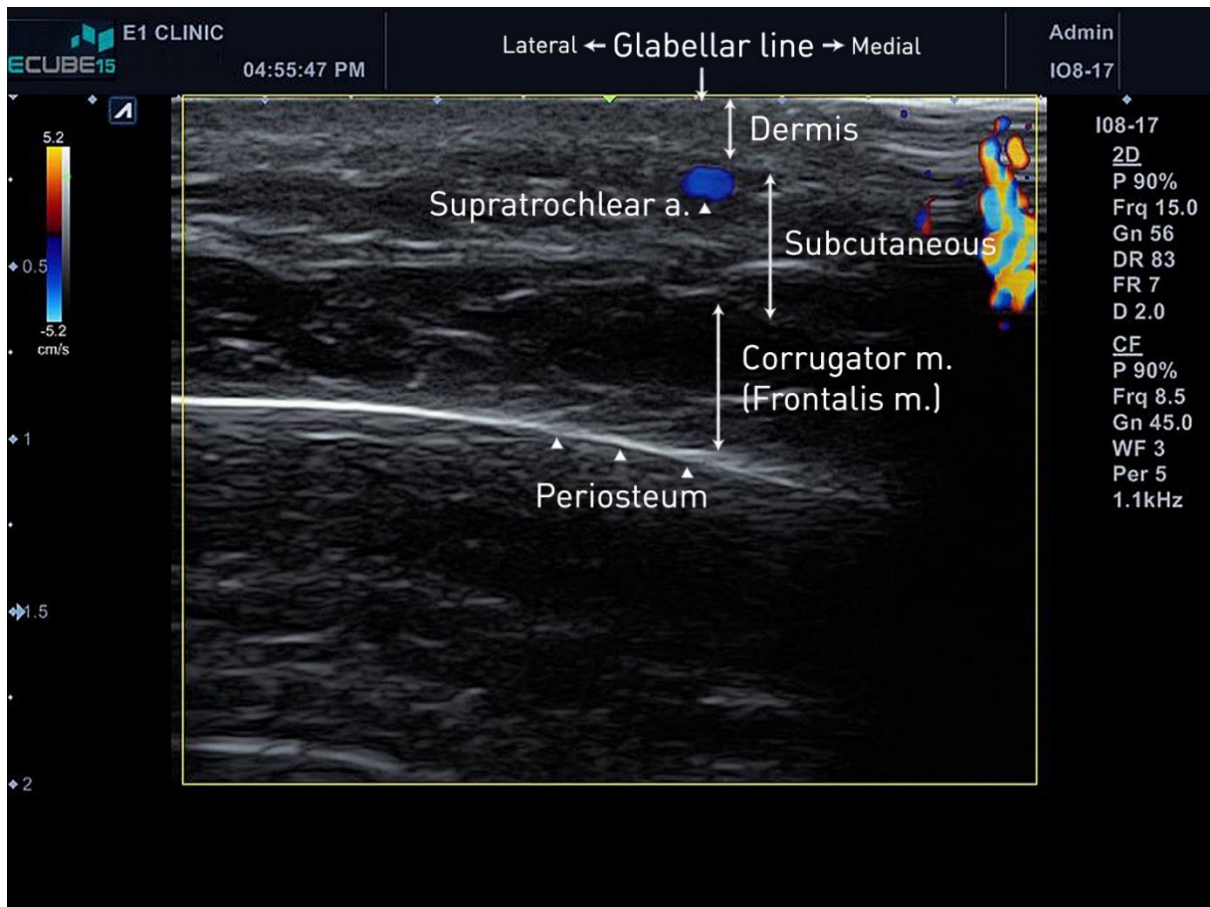


Fig. 1. The supratrochlear artery is located just beneath glabellar wrinkle dermal layer

Temple augmentation

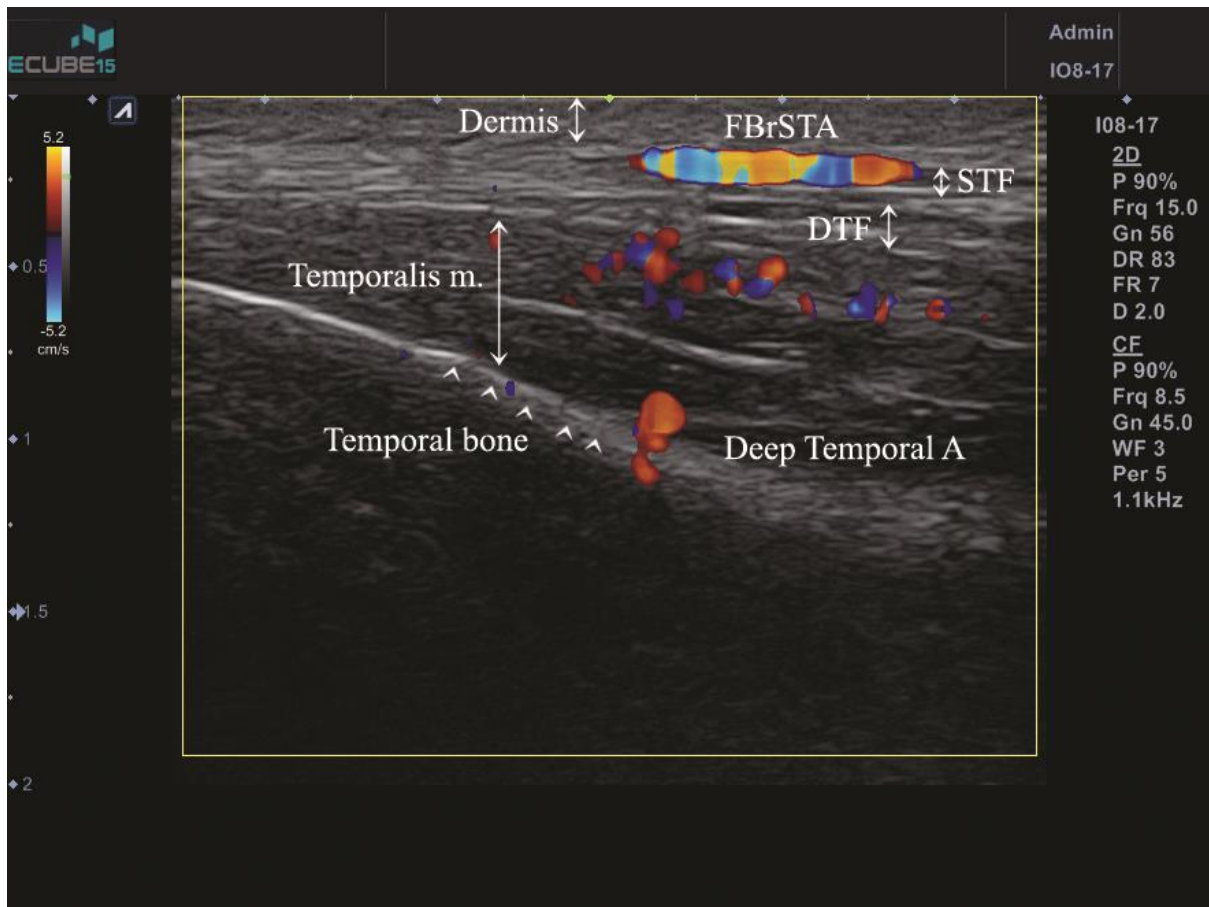


Fig. 2 Doppler ultrasound of the temple area. The frontal branch of superficial temporal artery and anterior branch of deep temporal artery are visible.

References

1. Lee W, Moon HJ, Kim JS, Yang EJ. Safe Glabellar Wrinkle Correction With Soft Tissue Filler Using Doppler Ultrasound. *Aesthet Surg J.* 2021;41(9):1081-1089.
2. Lee W, Park JW, Yang EJ. Temple augmentation by injecting a hyaluronic acid filler between the superficial and deep temporal fasciae. *J Cosmet Dermatol.* 2022 Apr 18.
3. Lee W, Moon HJ, Kim JS, Chan BL, Yang EJ. Doppler ultrasound-guided thread lifting. *J Cosmet Dermatol.* 2020;19(8):1921-1927.
4. Lee W, Moon HJ, Kim MS, Cheon GW, Yang EJ. Pre-injection ultrasound scanning for treating temporal hollowing. *J Cosmet Dermatol.* 2022;21(6):2420-2425.
5. Lee W, Kim JS, Oh W, Koh IS, Yang EJ. Nasal dorsum augmentation using soft tissue filler injection. *J Cosmet Dermatol.* 2019.
6. Moon HJ, Lee W, Do Kim H, Lee IH, Kim SW. Doppler Ultrasonographic Anatomy of the Midline

Nasal Dorsum. *Aesthetic Plast Surg.* 2021;45(3):1178-1183.

7. Lee W, Kim JS, Moon HJ, Yang EJ. A Safe Doppler Ultrasound-Guided Method for Nasolabial Fold Correction With Hyaluronic Acid Filler. *Aesthet Surg J.* 2021;41(6):NP486-NP492.