

# Scleredema Adultorum of Buschke in a Patient with Chronic myeloid leukemia

Ho-Sung Kim, Ji-An Uh, Joong-Ho Kim,  
Soo-Kyung Lee, Myoung-Shin Kim, Un-Ha Lee

Department of dermatology, Sanggye Paik Hospital  
Inje University College of Medicine, Seoul, Korea

# Case

---

- **Patient**

- M/39

- **Chief complaint**

- Skin lesion on upper back
  - Onset : 3-4YA

- **Present illness**

- Flesh colored indurated harden patches on upper back

- **Past History** : Chronic myeloid leukemia (on Nilotinib, 2016~)

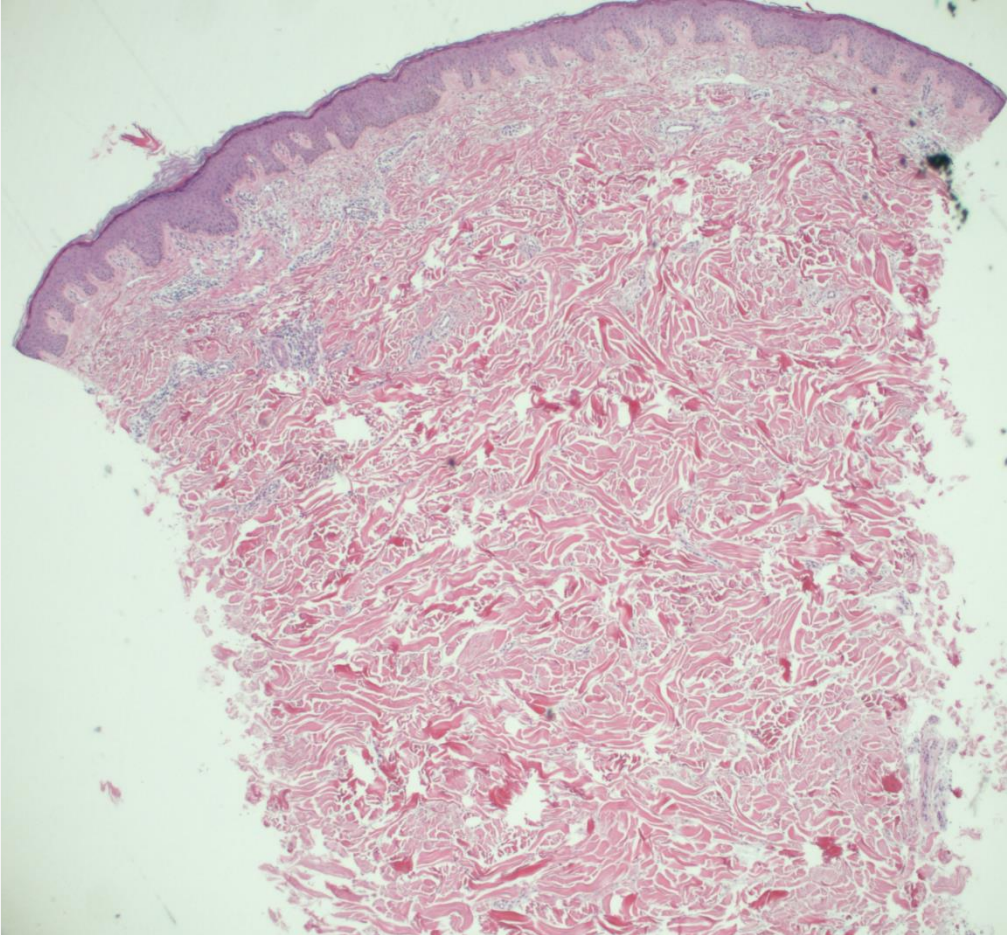
DM (-) prior URI (-) Monoclonal gammopathy (-)

# Skin manifestation



# Histopathologic findings

---

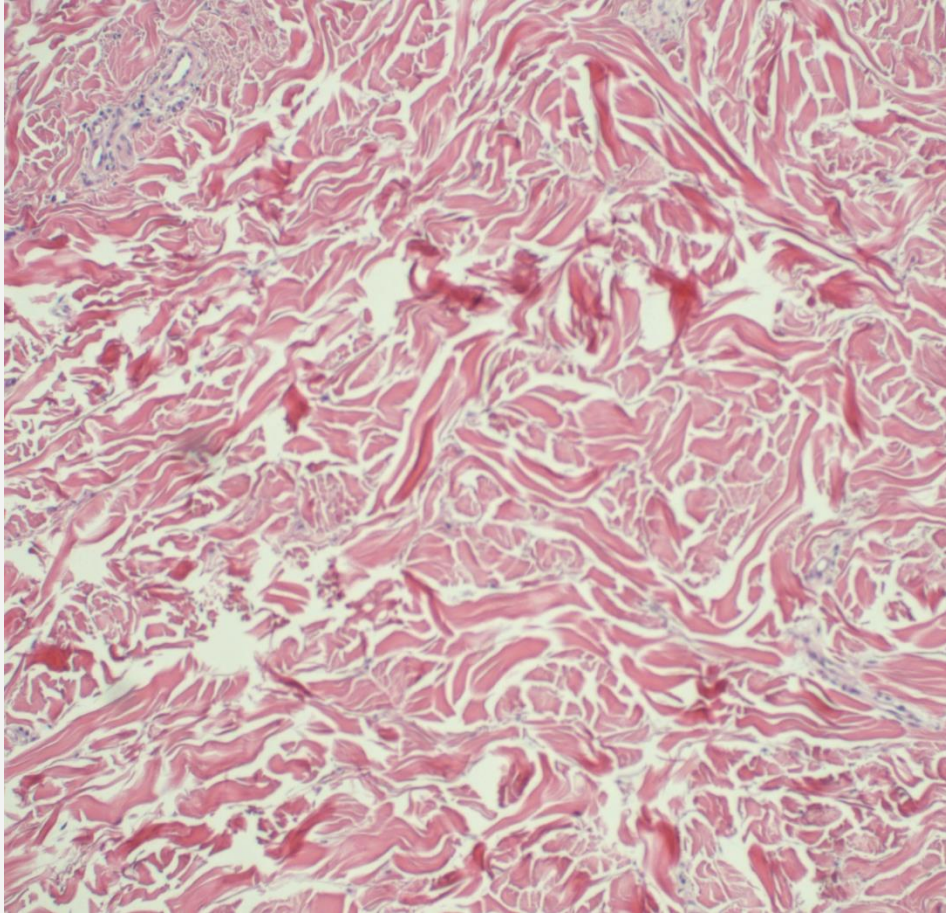


- non-tapered appearance : sclerotic change

(H&E stain, X40)

# Histopathologic findings

---



**(H&E stain, X100)**

- Clear space between collagen bundles: fenestration
- Lymphohistiocyte infiltration

# Diagnosis & Management

---

## Diagnosis

- Scleredema Adultorum of Buschke

## Management

- f/u loss after diagnosis

# Review

## Scleredema Adultorum of Buschke

# Pseudoxanthoma elasticum

---

Diffuse, non-pitting swelling and induration of the skin

3 groups : **DM (m/c) / Infection (URI) / Monoclonal gammopathy**

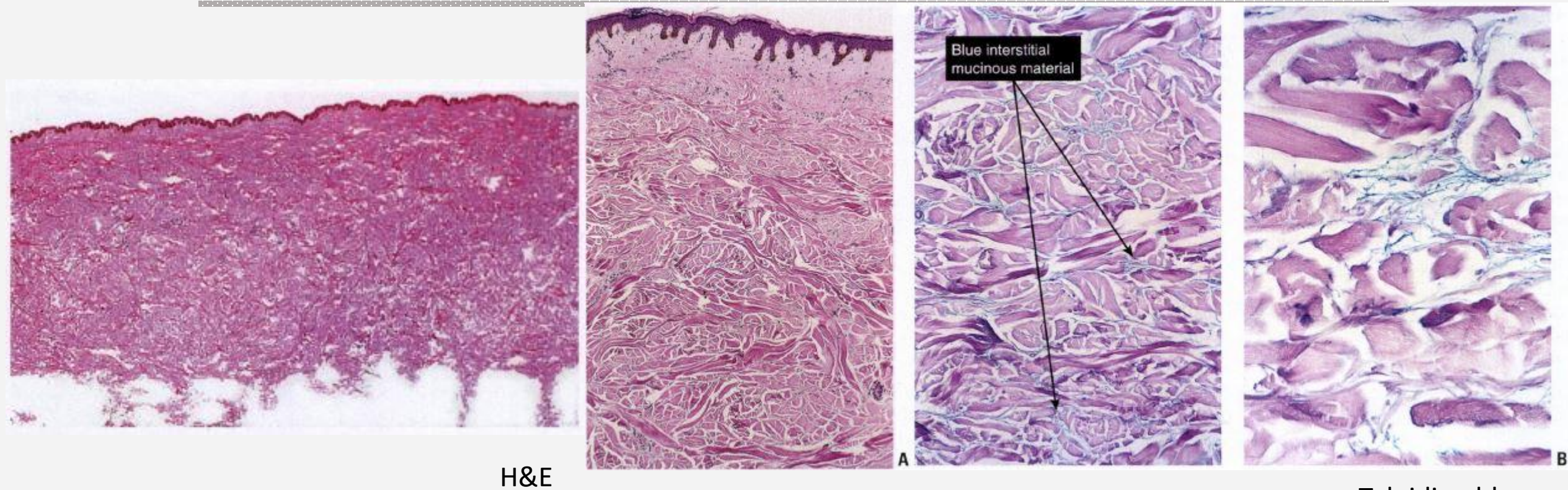
HIV, Carcinoid tumor, Malignant insulinoma, Gallbladder tumor, RA & Sjogren syndrome, Primary hyperparathyroidism → rare reports

Pathogenesis is largely unknown

Excessive accumulation of collagen & mucin



# Histopathology



- Dermis is about three times thicker than normal
- Thickened collagen bundles separated by clear spaces, causing “fenestration”
- Toluidine blue / Alcian blue : hyaluronic acid (mucopolysaccharides)

# Differential diagnosis

---

Differential diagnosis	Differences
<b>Scleroderma</b>	Appendage: atrophic change, loss Plasma cell infiltration Fenestration (-) : diffuse dermal sclerosis Homogenized, hyalinized collagen Alcian blue (-) : Mucopolysachride (-)
<b>Scleromyxedem a</b>	Affected areas: head (glabella, postauricular), neck, ext. Fibroblast proliferation (++)

# Treatment

---

No definitive treatment established

Some benefit has been reported with,

PUVA

Cyclophosphamide

Oral corticosteroids

Cyclosporin

UVA1 phototherapy

Electron beam radiation

# Conclusion

---

- This case presented **flesh colored indurated harden patches on the upper back** for several years
- No case reports of **CML associated Scleredema Adultorum of Buschke**

# References

---

- 1. Rongioletti F, Kaiser F, Cinotti E, Metze D, Battistella M, Calzavara-Pinton PG, et al. Scleredema. A multicentre study of characteristics, comorbidities, course and therapy in 44 patients. *J Eur Acad Dermatol Venereol* 2015;29:2399-2404.
- 2. Eckes B, Wang F, Moinzadeh P, Hunzelmann N, Krieg T. Pathophysiological mechanisms in sclerosing skin diseases. *Front Med (Lausanne)* 2017;4:120.
- 3. Yoshimura J, Asano Y, Takahashi T, Uwajima Y, Kagami S, Honda H, et al. A case of scleredema adultorum successfully treated with narrowband ultraviolet B phototherapy. *Mod Rheumatol* 2016;26:302-306.
- 4. Hong KR, Hong JY, Chung EH, Lee SH, Lee SW, Kim JE. Monoclonal Gammopathy-Associated Scleredema Adultorum of Buschke in a Patient with Diabetes Mellitus Successfully Treated with Intravenous Immunoglobulin and Narrow-Band Ultraviolet B Phototherapy: A Case Report. *Ann Dermatol.* 2021 Dec;33(6):586-588.